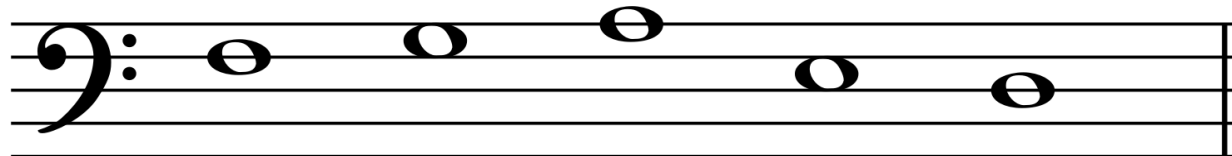


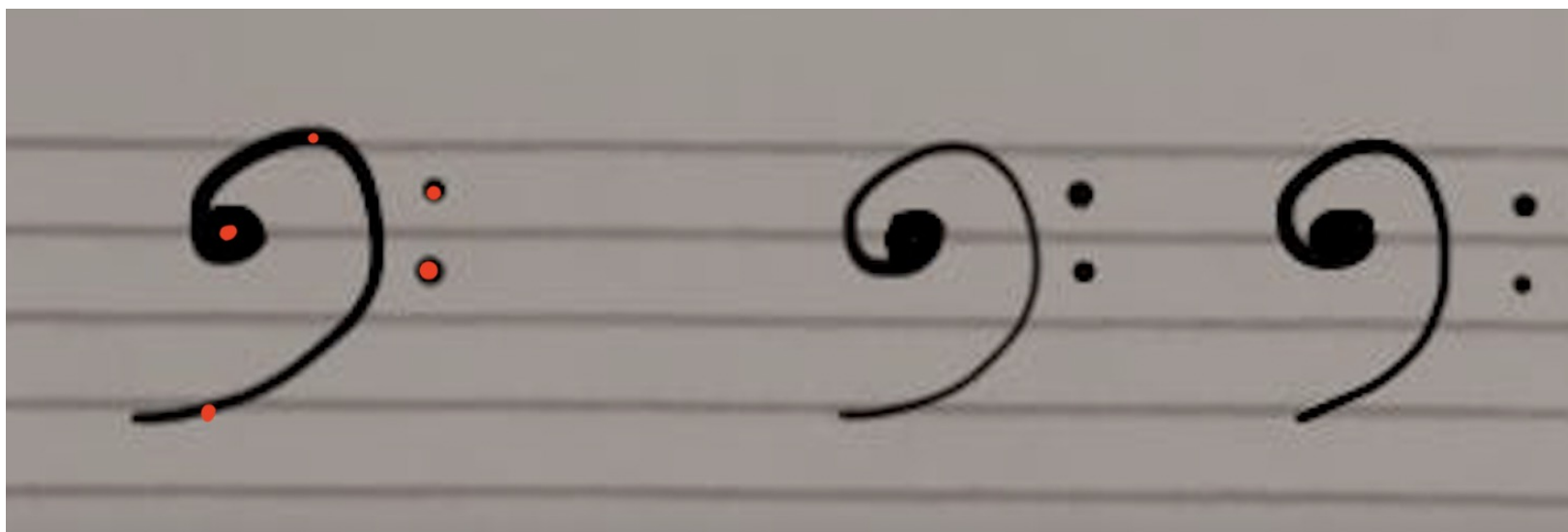
Introduzione alla chiave di FA  
e la lettura delle note

# Introduzione alla chiave di FA

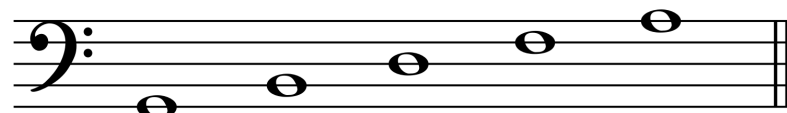
- La **chiave di FA**, ha il centro sulla quarta linea del pentagramma, e si usa per il **registro grave** del pianoforte.



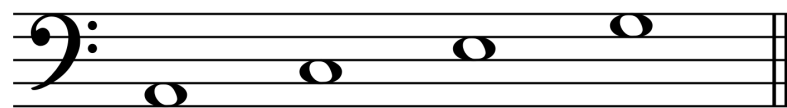
Scrivere la chiave di FA




# Note sulle linee e sugli spazi in chiave di SOL e di FA



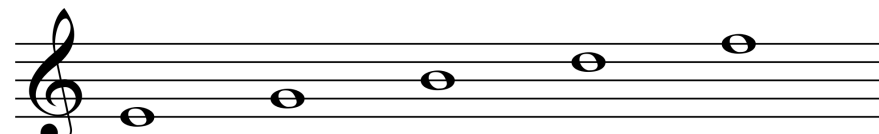
SOL SI RE FA LA



LA DO MI SOL




SOL LA SI DO RE MI FA SOL LA



MI SOL SI RE FA



FA LA DO MI



MI FA SOL LA SI DO RE MI FA

# L'endecalineo

*Esempio:*

(Chiave di Sol)

(Chiave di Fa)

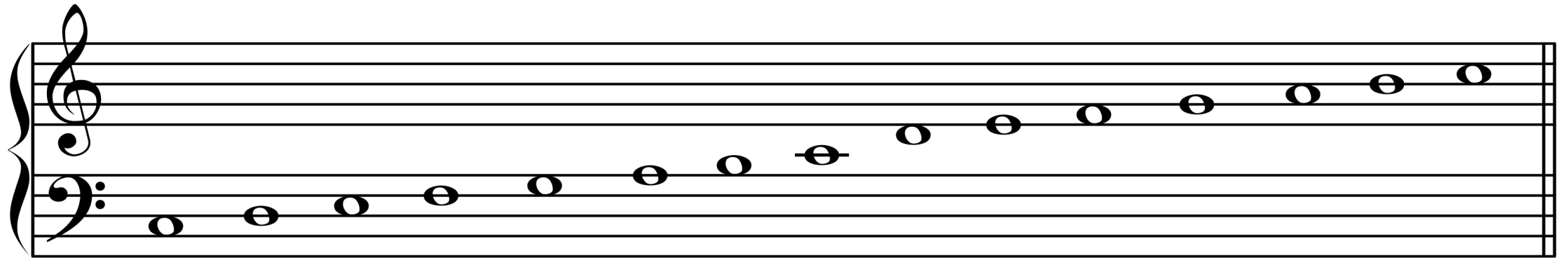
do re mi fa sol la si do re mi fa sol la si do

do si la sol fa mi re do si la sol fa mi re do

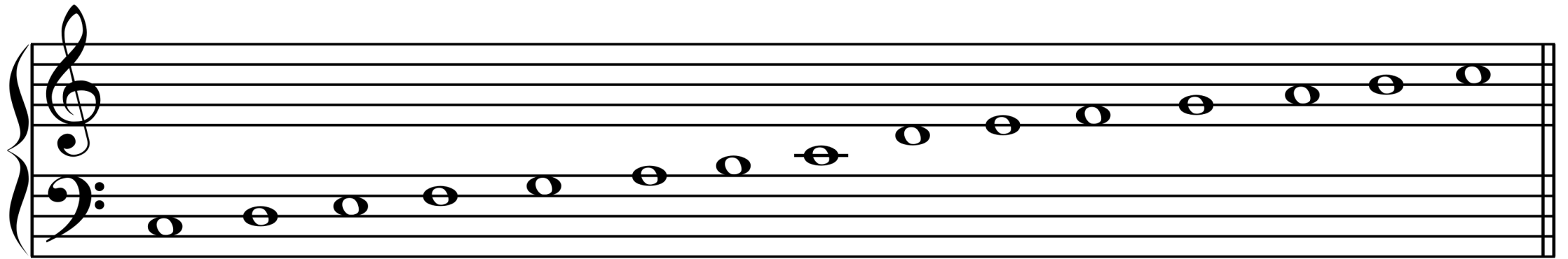
The image shows a musical score for an eleven-note scale. It consists of two staves: a treble clef staff (labeled '(Chiave di Sol)') and a bass clef staff (labeled '(Chiave di Fa)'). The treble staff contains the notes G4, A4, B4, C5, D5, E5, F5, G5, A5, B5, and C6. The bass staff contains the notes F3, G3, A3, B3, C4, D4, E4, F4, G4, A4, and B4. Above the treble staff, the notes are labeled 'do re mi fa sol la si do re mi fa sol la si do'. Below the bass staff, the notes are labeled 'do si la sol fa mi re do si la sol fa mi re do'. The notes are written as half notes. The word 'Esempio:' is written to the left of the staves. The final notes 'do' in both staves are underlined.

# L'endecalineo

- La combinazione di un pentagramma in **chiave di basso**, e un pentagramma in **chiave di violino**, uniti da una graffa, consente di minimizzare i tagli aggiuntivi. I due pentagrammi uniti costituiscono un'**accollatura**.



DO RE MI FA SOL LA SI DO RE MI FA SOL LA SI DO



DO RE MI FA SOL LA SI DO RE MI FA SOL LA SI DO

